

## Features

Smooth tensioning arm for fast and trouble free extending and retracting of projection screen fabric.

Screen fabric is taut because of large slat bar and strong spring mechanism.

Simple pull-out system locks at every desired viewing height.

Black border increases perceived clarity of projected image.

Easy mounting on wall, ceiling and/or in soffit via integrated hanging brackets.

Supplied complete with pull cord.

## Options

- ▶ Screen fabrics Matte White S, Datalux S and High Power.
- ▶ Formats square (1:1), video (4:3) and HDTV (16:9).

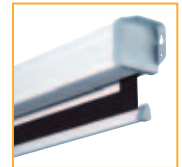
## Accessories (see pages 76-77)

### For mounting

- ▶ Ceiling brackets for mounting in high rooms or under recessed ceilings. 10800002 length max. 100 cm
- ▶ Wall brackets. 10800001 length 75 cm 10800041 length 30 cm

### For operation

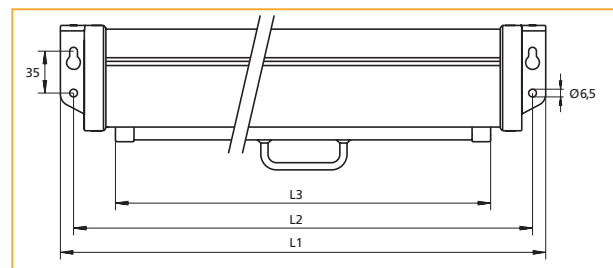
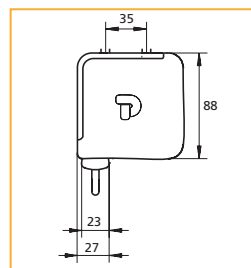
- ▶ If the projection screen is mounted at heights greater than 2.5 metres, a pull rod can be a handy aid in the rolling of a projection screen. 10800021 length 125cm



▲ Professional projection screen with spring mechanism in various aspect ratios, sizes and screen fabrics.

## Technical characteristics

- ▶ Projecta products satisfy the strictest quality and safety requirements in Europe and are CE approved.
- ▶ Projecta ensures that the quality of its products are monitored by the TÜV/GS programme.
- ▶ Steel case with galvanised interior and white powder coated exterior (RAL 9016).
- ▶ Matte White S: double-sided laminated vinyl on a woven fiberglass carrier with black backing; gain 1.0 and viewing angle 50° L/R.
- ▶ Datalux S: double-sided laminated vinyl on a woven fiberglass carrier with black backing; increased gain 1.5 and viewing angle 35° L/R.
- ▶ High Power : double-sided coated vinyl on a woven fiberglass carrier with black backing; high gain 2.8 and viewing angle 25° L/R.
- ▶ Projection screen fabrics satisfy the requirements for fire resistance of construction materials and components.
- ▶ Square format (1:1) has a 2.5-cm black border on left/right side.
- ▶ Video (4:3) and HDTV (16:9) formats have a 5-cm black border all around.



Aspect ratio	Screen size h x w cm	Viewing size h x w cm	Nominal diagonal		Case			Net weight in kg	Screen fabrics		
			cm	inches	L1 mm	L2 mm	L3 mm		Matte White S prod.code	Datalux S prod.code	HighPower prod.code
1:1	160x160	151x151			1711	1689	1620	10	10200001	10200026	10200011
	180x180	173x173			1911	1889	1820	12	10200002	10200027	10200013
	200x200	195x195			2131	2109	2040	14	10200004	10200028	10200015
	240x240	235x235			2531	2509	2440	17	10200006	10200033	
4:3	138x180	126x168	213	84	1911	1889	1820	11	10200016	10200030	10200018
	153x200	143x190	254	100	2131	2109	2040	13	10200008	10200031	10200020
	183x240	173x230	305	120	2531	2509	2440	16	10200009	10200032	10200022
	★ 213x280	203x270	355	140	2931	2909	2840	19	10200005	10200034	
16:9	117x200	107x190	234	92	2131	2109	2040	12	10200035	10200036	
	139x240	129x230	269	106	2531	2509	2440	15	10200023	10200029	
	★ 162x280	152x270	302	119	2931	2909	2840	18	10200090	10200091	