

## Features

Extra thick metal roller prevents sagging screen fabric.

Spring mechanism guarantees smooth extending and retracting of screen fabric.

Simple pull-out system locks at every desired viewing height.

Black border increases perceived clarity of projected image.

Easy mounting via integrated hanging brackets.

## Options

- ▶ Formats square (1:1), video (4:3) and HDTV (16:9).

## Accessories (see pages 76-77)

### For mounting

- ▶ Wall brackets.  
10800035 length 57 cm

### For operation

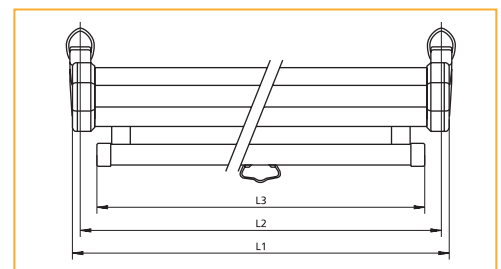
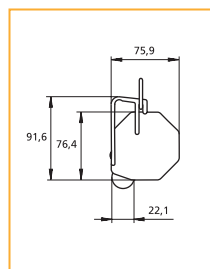
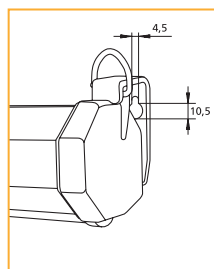
- ▶ If the projection screen is mounted at heights greater than 2.5 metres, a pull rod can be a handy aid in the rolling of a projection screen.  
10800021 length 125cm



▲ Projection screen with spring mechanism in compact case available in a length of 244 cm.

## Technical characteristics

- ▶ Octagonal case in white painted steel.
- ▶ Matte White S: double-sided laminated vinyl on a woven fiberglass support with black backing; gain 1.0 and viewing angle 50° L/R.
- ▶ Projection screen fabric(s) satisfies the requirements for fire safety for building materials and building components.
- ▶ Square format (1:1) has a small black border on the left/right side.
- ▶ Video (4:3) and HDTV (16:9) formats have a wide black border all around of 5 cm.



Aspect ratio	Screen size h x w cm	Viewing size h x w cm	Nominal diagonal cm inches		Case			Net weight in kg	Screen fabric Matte White S prod.code
					L1 mm	L2 mm	L3 mm		
1:1	244x244	244x234			2524	2505	2463	11	10230020
4:3	185x244	175x234	305	120	2524	2505	2463	10	10230018
16:9	142x244	132x234	269	106	2524	2505	2463	10	10230019